

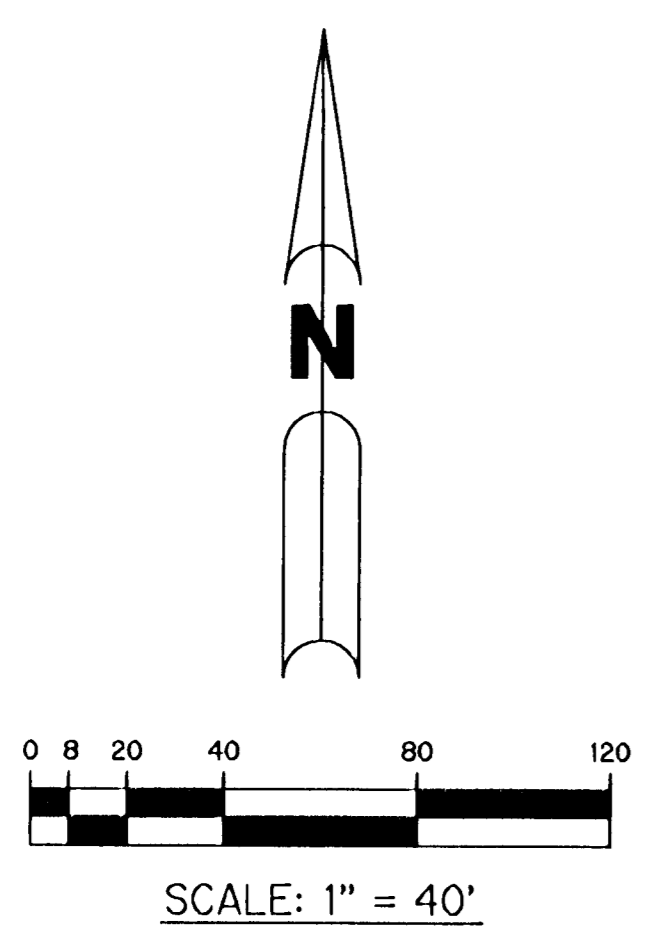
CANYON LAKES (A.K.A. FOGG) PLANNED UNIT DEVELOPMENT

# CANYON LAKES - PLAT SIX

BEING A REPLAT OF A PORTION OF TRACTS 17, THROUGH 19, TRACTS 46 THROUGH 51, TRACTS 77 THROUGH 80, AND A PORTION OF A ROAD, DYKE AND DITCH RESERVATION, 30.00 FEET IN WIDTH, ALL LYING WITHIN BLOCK 54, PALM BEACH FARMS COMPANY PLAT NO. 3, ACCORDING TO THE PLAT THEREOF, RECORDED IN PLAT BOOK 2, PAGES 45 THROUGH 54 AND A REPLAT OF TRACT R-1 OF CANYON LAKES - PLAT ONE, ACCORDING TO THE PLAT THEREOF, RECORDED IN PLAT BOOK 101, PAGES 191 THROUGH 207, ALL OF THE PUBLIC RECORDS OF PALM BEACH COUNTY, FLORIDA, LYING IN SECTION 29, TOWNSHIP 45 SOUTH, RANGE 42 EAST, PALM BEACH COUNTY, FLORIDA

THIS INSTRUMENT PREPARED BY  
PERRY C. WHITE, P.S.M. 4213, STATE OF FLORIDA  
LAWSON, NOBLE AND WEBB, INC.  
ENGINEERS PLANNERS SURVEYORS  
420 COLUMBIA DRIVE  
WEST PALM BEACH, FLORIDA 33409  
LB-6674

SHEET 9 OF 11 MARCH, 2004



PALM BEACH FARMS  
COMPANY PLAT NO. 3  
(P.B. 2, PG. 45)  
(BLOCK 54)

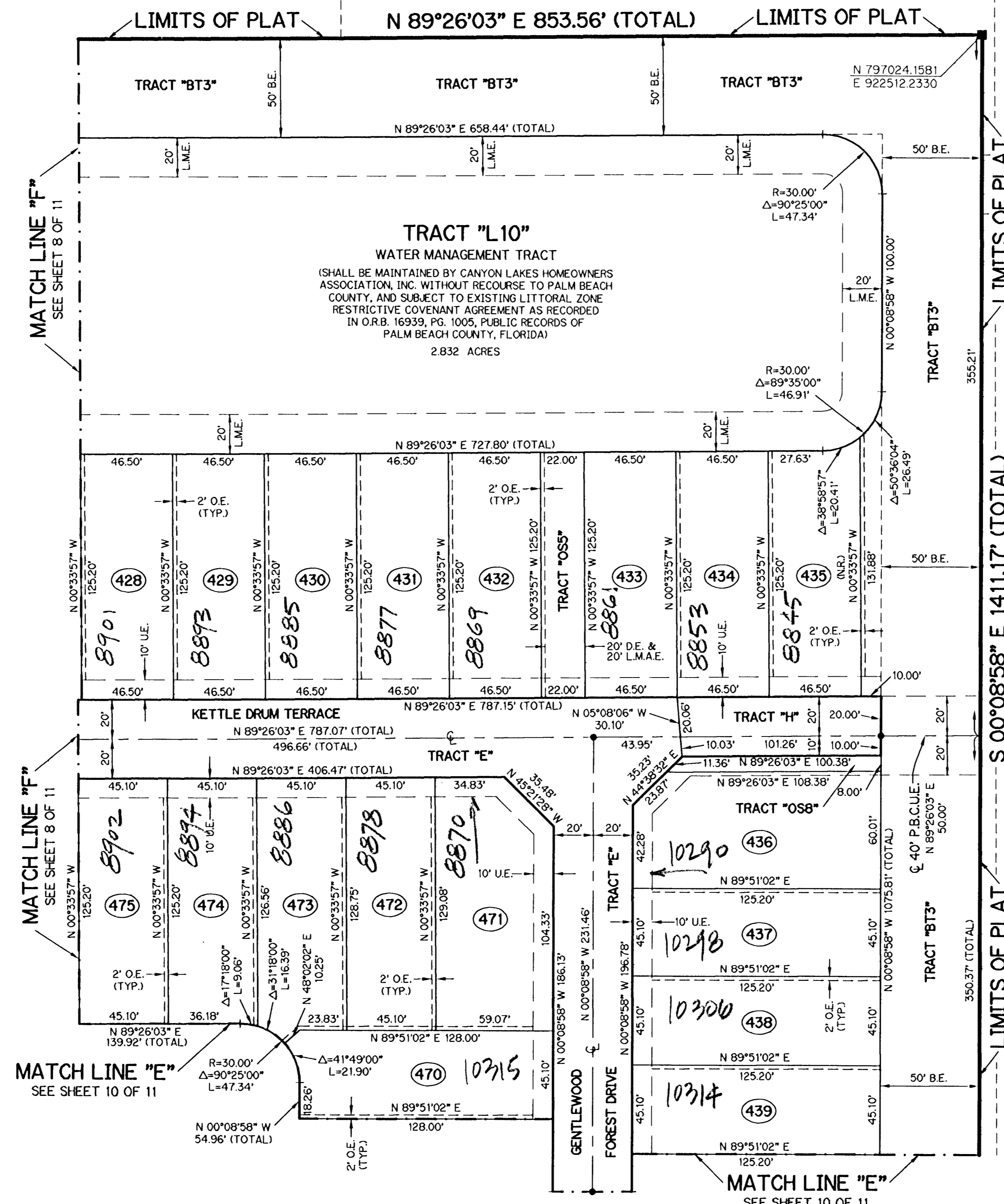
PALM BEACH FARMS  
COMPANY PLAT NO. 3  
(P.B. 2, PG. 45)  
(BLOCK 54)

### LEGEND:

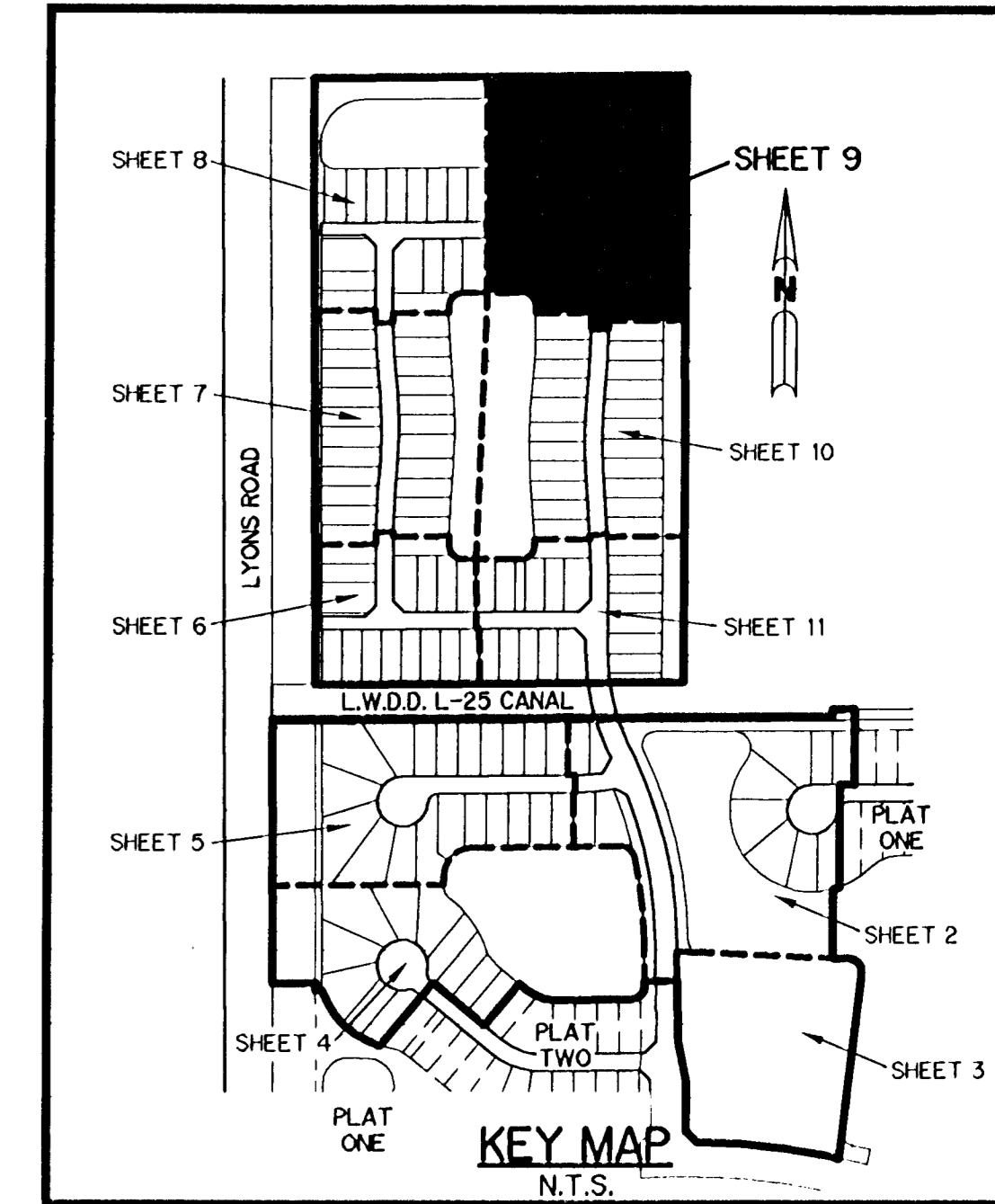
- - SET PERMANENT REFERENCE MONUMENT, L.B. #6674
- - FOUND PERMANENT REFERENCE MONUMENT, L.B. #6674
- - SET PERMANENT CONTROL POINT, L.B. #6674
- - FOUND PERMANENT CONTROL POINT, L.B. #6674
- Δ - DELTA ANGLE
- B.E. - BUFFER EASEMENT
- CB - CHORD BEARING
- CH - CHORD DISTANCE
- C - CENTERLINE
- D.B. - DEED BOOK
- D.E. - DRAINAGE EASEMENT
- GRD. - GROUND
- L - ARC LENGTH
- L.A.E. - LIMITED ACCESS EASEMENT
- L.M.A.E. - LAKE MAINTENANCE ACCESS EASEMENT
- L.M.E. - LAKE MAINTENANCE EASEMENT
- L.W.D. - LAKE WORTH DRAINAGE DISTRICT
- N.T.S. - NOT TO SCALE
- O.R.B. - OFFICIAL RECORD BOOK
- P.B. - PLAT BOOK
- P.C. - POINT OF CURVATURE
- P.C.P. - PERMANENT CONTROL POINT
- P.S. - PAGES
- P.O.B. - POINT OF BEGINNING
- P.O.C. - POINT OF COMMENCEMENT
- P.R.M. - PERMANENT REFERENCE MONUMENT
- P.S.M. - PROFESSIONAL SURVEYOR AND MAPPER
- P.T. - POINT OF TANGENCY
- R - RADIUS
- RAD. - RADIAL
- R/W - RIGHT-OF-WAY
- TYP. - TYPICAL
- U.E. - UTILITY EASEMENT
- N 100000.0000  
E 100000.0000 - DENOTES STATE PLANE COORDINATES

### NOTE:

COORDINATES SHOWN ARE GRID COORDINATES  
DATUM = NAD 83, 1990 ADJUSTMENT AS READJUSTED  
BY PALM BEACH COUNTY IN 1998  
ZONE = FLORIDA EAST ZONE  
LINEAR UNIT = U.S. SURVEY FEET  
COORDINATE SYSTEM = 1983 STATE PLANE  
TRANSVERSE MERCATOR PROJECTION  
ALL DISTANCES ARE GROUND  
SCALE FACTOR = 1.000027  
PLAT BEARING = GRID BEARING  
NO ROTATION



PALM BEACH FARMS  
COMPANY PLAT NO. 3  
(P.B. 2, PG. 45)  
(BLOCK 54)



SUBDIVISION CANYON LAKES - PL 6  
BOOK 103 PAGE 35  
FLOOD ZONE B  
QUAD # 50  
SE  
TAZ 748  
PUD NAME FOGG NORTH